



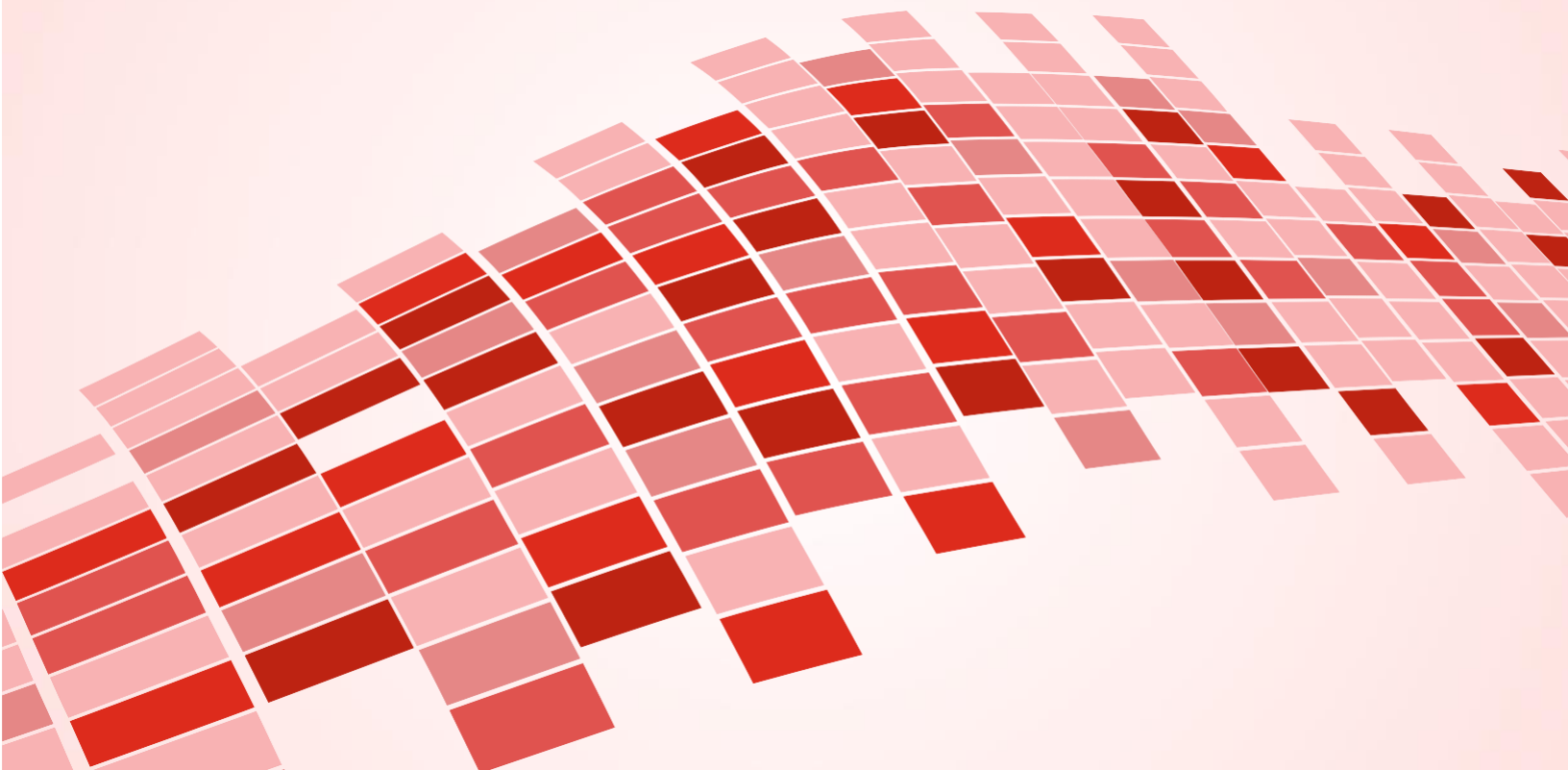
RESONANCE AUTOMATION AND MACHINES

PLOT NO. 1131 HARI ENCLAVE KIRARI SLEMAN NAGAR NEW DELHI-110086

2ND PLANT H-936 RIICO CHOPANKI INDUSTRIAL AREA ALWAR RAJSTHAN-301707

VERTICAL AUTOCLAVE

MODEL NO. RESOTECH CLAVE-45212



Steam Jacketed & Vertical Autoclave



MODEL NO. RESOTECH CLAVE-45212

Vertical Autoclave Triple Walled is a perfect solution for steam sterilization. The equipment is considerably created for various processes take place in hospitals, clinics and other industries where sterilization is required. These smartly built chambers provide a safe and useful performance even when the space is limited. These systems can be personalized according to the specific needs of the clients and many extra accessories such as – temperature graph recorder, digital meter for temperature control; PID controller can also be installed further as per client's choice.

Moreover, the boiler and external case in the equipment is offered with air filling. The **Sterilization Equipment** comes with water level meter, pressure control device, and a steam liberate device as well which helps in trouble-free execution.

The walls of the equipment are made up of solid stainless sheet (SS-304 grade). The cap is made up of stainless steel and a radial security system is fixed with a paddle elevating equipment. Apart from this, these equipments are chrome coated fixed on ms ring, properly colored after de-lubricated and rust proofing. They also come with a major security device, pressure measure device and a water-level pointer. Moreover, they are also packed with a plug and cord to function on 220/230 volts, 50Hz AC supply.

A gas-tight, sealable pressure vessel, used for the thermal treatment of substances in the overpressure range. Autoclaves are used for sterilizing, curing building materials, for vulcanizing tires and belts and for pressing fiber composites. As a result, they are used in medical and food technology, biology, the glass and aviation industries, as well as in brickworks and vulcanizing plants.

Working Chamber

Dia mm X Depth mm	Volume
250mm X 450mm	22 Ltrs
300mm X 500mm	35 Ltrs
350mm X 550mm	52 Ltrs
305mm X 381mm	70 Ltrs
450mm X 600mm	95 Ltrs
550mm X 750mm	178 Ltrs

PRINCIPLE: The vertical autoclave works on the principle of high-pressure for sterilizing equipment and medical tools. The primary function of top loading or vertical autoclaves is to generate steam for creating pressure and building up heat. The formation of heat helps in sterilizing medical tools like flasks, beakers, etc., and makes them free from viruses, bacteria, and other microorganisms.

Components of Vertical Autoclave

An Autoclave comprises numerous parts. Some parts are standard whereas some are optional. The standard fittings of a vertical autoclave comprise automatic pressure switch, pedal lifting device, steam release valve, water outlet valve, low water indicator, safety valve, heating lamp, etc. Regardless of the type and construction of an autoclave, these parts are present and perform individual function. Some companies demand for additional accessories with vertical autoclaves. These accessories include thermal printer, lower water cut-off, dressing drum, autoclave bags and PLC Control system. In healthcare, food industries and many other industries, both horizontal and vertical autoclaves are used. However, these two machines perform the similar function but have certain distinguished features.

Features:

Tank volume 70to 80 liters	Equipped with joint less silicon rubber gasket
Provided with immersion type heater	Double, triple wall & GMP construction
Supply with drums (extra cost)	Water level indicator
Easy operation and low maintenance	Digital temperature indicator
Provision to attach dot matrix printer	USB interface for data transfer

TECHNICAL SPECIFICATION

Type	Cylindrical
Construction	Inner, Outer & Jacket SS 304
Temperature	134°C
Operating pressure	2.5 bar
Sterilization timer	1/250 minutes
Lid	SS plate 304
Dimensions	(width 30-40 cm, height 70-80cm)
Heating device	Horizontally mounted, preferably separated from the chamber with minimal water volume (4-7)
Capacity	22- 178 liters
Automatic water feed	Connection to a demineralized water supply
Automatic level control	During and after the sterilization cycle

<p>Features</p>	<ol style="list-style-type: none"> 1. Low water level cut out device 2. Automatic sterilization system for unattended operation 3. Pressure gauge attached to the front side for easy check 4. Temperature setting keys to increase/ decrease temperature 5. Real time temperature display 6. Graphical display progress of sterilization cycle throughout the process 7. Time display and keys to set time 8. Over current protection 9. Over temperature protection by automatic power cutoff 10. Over pressure protection by automatic and manual safety valve 11. Over temperature warning 12. Sterilization fail warning 13. Low water level 14. Temperature dependent door locking system 15. Exhaust valve knob and air release knob 16. Control lock-out switch that prevents starting a cycle if the door is not locked safely 17. Top opening lid, foot mediated opening facility also. Fast safety lid lock 18. Stage of cycle and warning/alarm alert checks along with control panel 19. Drain port for draining water inside the chamber 20. Water level sensor to detect & display warning if water level is blow acceptable range 21. Element heater to heat the sterilizing water inside the chamber
<p>Power Supply</p>	<p>230 VAC ,50HZ, single phase</p>

OUR VALUED CUSTOMERS



IndianOil

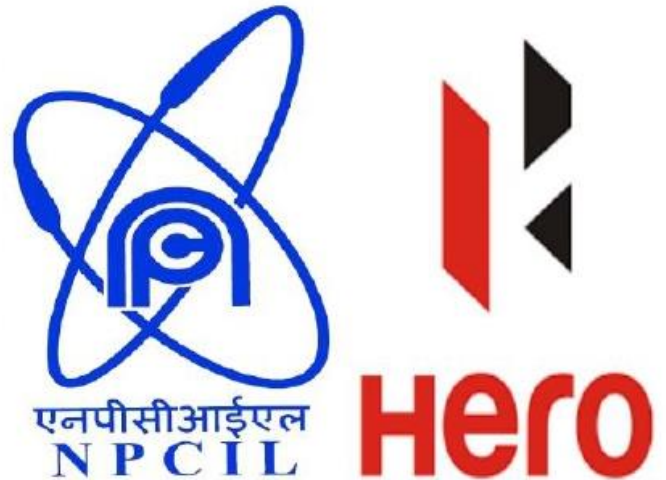
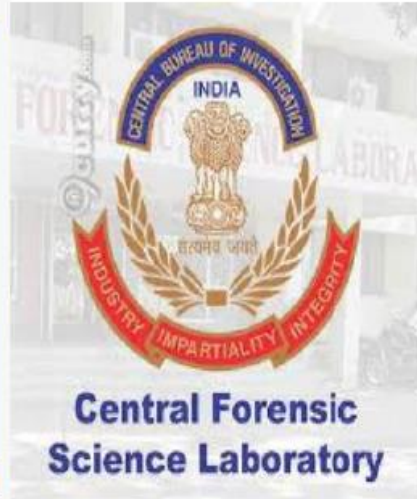


आरोग्यम् सुख सम्पदा



भारतीय मानक ब्यूरो
Bureau of Indian Standards
The National Standards Body of India







सत्यमेव जयते

MINISTRY OF CONSUMER
AFFAIRS, FOOD AND
PUBLIC DISTRIBUTION

रक्षा मंत्रालय
MINISTRY OF
DEFENCE
भारत सरकार



सत्यमेव जयते

रक्षा उत्पादन विभाग
DEPARTMENT OF
DEFENCE PRODUCTION
GOVERNMENT OF INDIA



ORDNANCE FACTORY BOARD

MINISTRY OF DEFENCE, GOI

CENTRAL RESEARCH
INSTITUTE (CRI)
RECRUITMENT

एन एस आई सी
NSIC
ISO 9001 : 2008



BHARAT DYNAMICS LTD.
(A Govt. of India Enterprise)



भाकृअनुष
ICAR



Indian Institute of
Chemical Biology

a unit of C.S.I.R.



आयुध निर्माणी, कानपुर
ORDNANCE FACTORY, KANPUR



TROOP COMFORTS LTD.



**International Centre
for Automotive Technology, Manesar**



सत्यमेव जयते

Department of Animal Husbandry,
Dairying & Fisheries



Napino Auto & Electronics Ltd.

Cutwell Abrasives Pvt Ltd
ISO 9001 - Certified Superior in Performance

RICO
RICO AUTO INDUSTRIES LIMITED

senior
Flexonics

talbro
Automotive Components

fmi
Future Market Insights

JBM Group
Our milestones are touchstones

SOMIC ZF
SOMIC ZF Components Pvt. Ltd.

Genus
energizing lives

Continental
The Future in Motion

Saxon Fluid Sealing Devices

AMTEK

K
KIRAN UDYOD PVT. LIMITED

TOGETHER WE EXCEL
MHMC

MUNJAL KIRIU

Napino

JABIL

DESPL DYNAMIC ENVIRONMENTAL SOLUTIONS PVT. LTD.

