



PLOT NO. 1131 HARI ENCLAVE KIRARI SLEMAN NAGAR NEW DELHI-110086

2ND PLANT H-936 RIICO CHOPANKI INDUSTRIAL AREA ALWAR RAJSTHAN-301707



RESOTECH- BLOOD BANK REFRIGERATOR

Professional Manufacturer of Test Equipment



MAKE: - RESOTECH

MODEL NO. : - RESOTECH-WINSUN2811

MANUFACTURERS & SUPPLERS

SPECIAL PURPOSE MACHINE, MATERIAL TESTING MACHINE, LEAKAGE TESTING MACHINE, PACKAGING TESTING MACHINE, ENVIRONMENTAL TEST CHAMBER, ASSY. LINE EQUIPMENT, SOLUTION FOR ELECTRONIC AUTOMATION AND PRODUCT DEVELOPMENT, COMPUTERIZED CONTROL MACHINE , PLC HMI SCADA VISUAL BASIC SOFTWARE DEVELOPMENT SOLUTION AND OTHER SERVICES.

The mechanical properties of materials are determined by performing carefully designed laboratory experiments that replicate as nearly as possible the service conditions. In the real life, there are many factors involved in the nature in which loads are applied on a material. The following are some common examples of how these loads might be applied: UNIVERSAL, compressive and shear, just to name a few. These properties are important in materials selections for mechanical design.

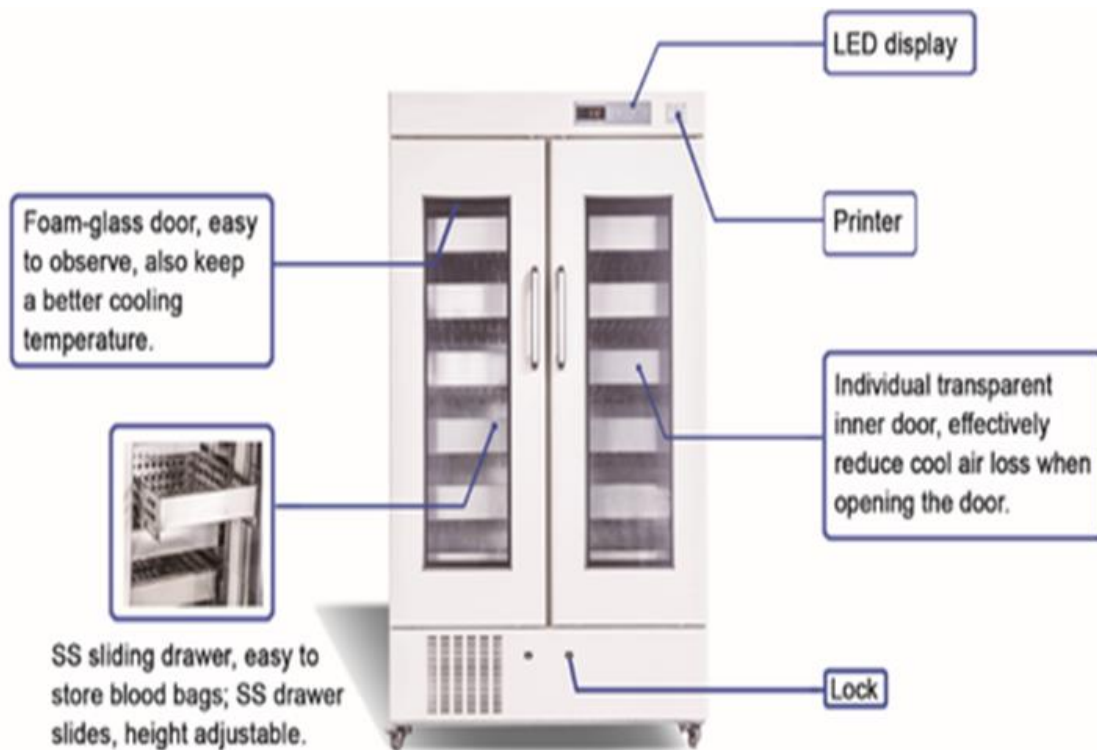
Blood Bank Refrigerator is a dual door 616 L microprocessor controlled compact refrigerator with an automated self-close design. Twelve adjustable shelves with transparent inner doors ensures stable storage temperatures during a door opening. Exclusive temperature box for determining temperature of blood in storage. Forced air cooling system helps maintaining temperature uniformity.

Features

- Automated self-closing dual door
- Transparent inner door minimizing loss of cold temperature
- Heated double glass pane glass door preventing condensation under high temperature and .
- Temperature box (determines temperature of blood in storage
)
Twelve adjustable shelves for blood bag storage
- Blood baskets to be placed on shelves
- Password protection avoiding random change in
parameters
4 temperature probes (2 for display; 2 for
programming) Automated defrosting mode
- Constant temperature and system monitoring ensuring safe inner storage
- Safety features (High-low temperature, Low battery, Controller error, power failure for 72hrs. alarm)

APPLICATIONS

Used to store blood, vaccines, reagents, bio products and special test materials



Blood Bank refrigerator is a specialized refrigerating equipment for cold storage of pharmaceuticals as well as biological products and so forth. It is suitable for hospitals, drugstore, and pharmaceuticals
Factories, sanitation and antiepidemic stations and clinics.

- Precise temperature control
- Interior of chamber is stainless steel (SS-304).
- outer chamber MILD STEEL powder coated
- Fitted with specially designed deviation alarm from the preset temperature, door open alarm and
- Power failure alarm.

STAINLESS STEEL BASKETS

- Are provided for storage inside.
- Foamed - in - place CFC Free PUF insulation ensure temperature stability and reduced energy temperature.
- Stainless steel heavy duty basket ensures even temperature distribution
- Micro - controller controls the internal temperature between 2°C to 6°C with an accuracy of
- $\pm 1^{\circ}\text{C}$, for storing blood bottles or blood bags.
- The Cooling Is Effected By A Hermetically Sealed
CFC FREE ECO FRIENDLY COMPRESSOR
- To work on 220/240 volts A.C

USER FRIENDLY DESIGN

- Exterior Made From High Quality Structural Steel Plate, Painted By Advanced Coating Technology After
- The Anti Corrosion Treatment Of Phosphorylation, The Superficial Luster Is Gentle, Interior Made From
- Stainless Steel Mirror Finishing.
- Double Deck Glass Door, Inert Gas, Equipped With Special Lock, Four Casters Are Mounted Under The Bottom.
- Interior Fluorescent Lighting Provides A Clear View Of Stored Items.
- Shelves Made Of Quality Steel Wire Soaked With Plastic Provide Convenient Access To The Stored
- Articles And Easy Cleaning.

REFRIGERATION SYSTEM

- Efficient Compressor, High Efficiency, Silence And Energy Saving. Highly Effective Condenser And Expansile
- Evaporator Provide Quick Freezing.
- The System Should Have High Density CFC –Free Urethane Foam Insulation.
- To Protect Cabinet From Ambient Temperature Fluctuation. The System Should Have Air-Cooled Compressor, Forced-Air Refrigeration System For Uniformity Of $\pm 1^{\circ}\text{c}$

Blood Bank Refrigerators

Salient Features :

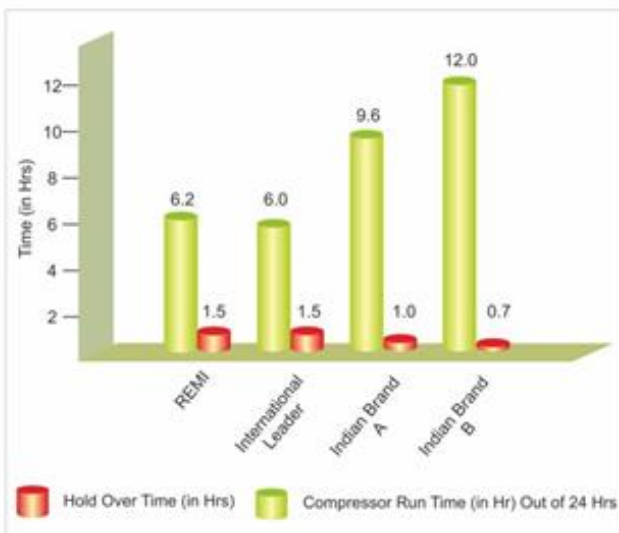
- Auto defrost mechanism to prevent frost formation
- Self-diagnosis & display of errors
- Safety thermostat for avoiding negative temperature
- Triple pane glass to prevent temperature loss
- Settable parameters for
 - Temperature set point
 - High / low temperature alarm point
 - Buzzer off time
- Audio / Visual alarms for
 - Temperature high / low
 - Power failure
 - Sensor open / Short
 - Door Open
 - Compressor on
 - Power on
- Compatibility with REMI XS for wireless data logging



7" Touch Screen
(in Ultra Model)

Compressor Functioning & Holdover Time

(Best in Class Insulation)



* Data on file

Touch Screen Display

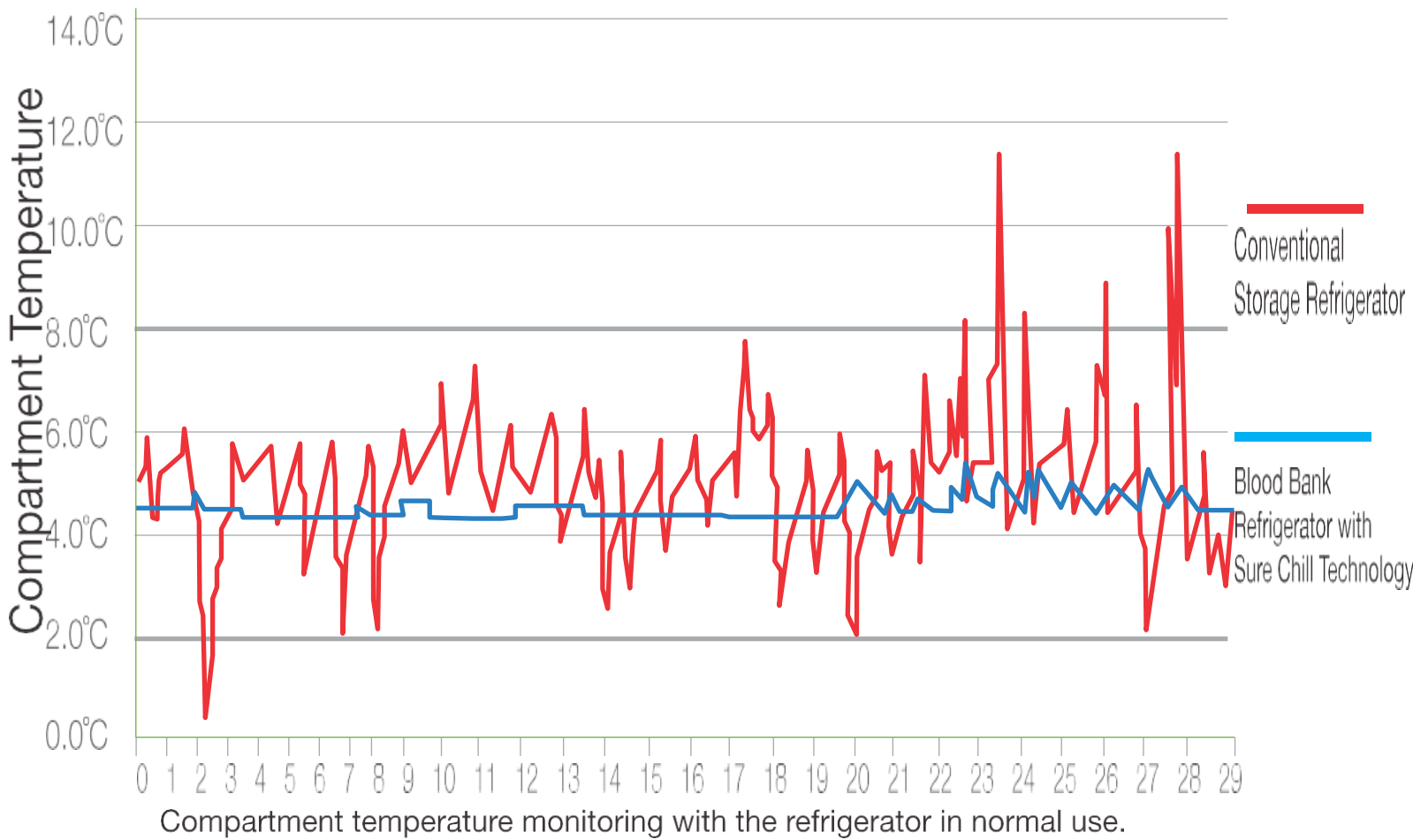
- 7" Multicolored touch screen with user interface
- Displays temp, alarms, date & time
- Data logging with multiple option & transfer via Ethernet, USB port
- PLC (Programmable logic controller) with internal memory of 1500 records
- Battery backup for display, alarms & off-line data logging
- Password protected settings for system control & notifications
- Onscreen access for data logs, temperature graph, system status, troubleshooting, etc.
- REMI 'Datasoft' software for generating various reports, SMS alerts & analysis (Optional)

Technical specification & ordering information

MODEL	RESOTECH WINSUN-2807	RESOTECH WINSUN-2808	RESOTECH WINSUN-2809	RESOTECH WINSUN-2810	RESOTECH WINSUN-2811	RESOTECH WINSUN-2812
Capacity	85 Ltrs.	195 Ltrs.	265 Ltrs.	350 Ltrs.	440 Ltrs.	530 Ltrs.
Inner Tank Size (WxDxH) Inches	18x18.5x17.6	24x28.5x17.6	24x28x24	24x28x32	24x28x40	24x28x48
External Body Size (WxDxH) Inches	23.5x22x34.6	29.4x33x34.6	29x37.4x46	29x37.4x54	29x37.4x64	29x37.4x72
Tray Size (WxDxH)	14.8x17.5x4	20.7x28x4	20x27x4	20x27x4	20x27x4	20x27x4
Blood Bag Accommodation (of 350ml Cap.)	24 Bags	60 Bags	120 Bags	180 Bags	240 Bags	300 Bags
No. Of Drawers	1	1	2	3	4	5
Drawer Capacity	24 Bags to 300 Bags capacity					
Drawer Movement	Adjustable and Extendable Pull Out Modular Drawers.					
Temperature	2°C to 6°C					
Trays no. and type	4 Trays (Vertical model)					
MOC (Inner Chamber)	Stainless Steel 304 (AISI Grade, Non Corrosive, Non Magnetic).					
MOC (Outer Chamber)	PCRC sheet duly powder coated					
MOC (Drawers)	PCRC sheet duly powder coated /Stainless Steel 304					
Insulation	Thick foamed in place CFC free polyurethane foam (PUF).					

illumination	Provided for clear inner view.
See Through Multipaned Vacuumed Glass Door (OPTION)	Dual pane transparent glass door. Accounts for minimum moisture condensation on the door.
Door Lock	Provided for safety and security of specimen.
Door Open Alarm	Audio Visual Alarm.
Power Failure Alarm	Audio Visual Alarm.
Refrigeration System	Hermetically sealed compressor with CFC free refrigerants.
Evaporator	Finned evaporator accounts for quick and uniform cooling.
Hold Over Time (As Per WHO Guidelines)	
Auto Condensate Removal	For removal of condensate water.
Castor Wheels	Fitted with Castor Wheels
Temperature Controller	Microprocessor based Digital Temperature Indicator-Cum-Controller with in-built HI/LOW Temperature deviation alarm.
Validation Port	Validation port to insert sensors for validation purposes.
Chart Recorder (Option)	7 Days circular temperature chart recorder.
Com-Port (Option)	Communication Port for logging data to your PC.
Voltage Surge Protection (Option)	Automatic/ Servo Voltage Stabilizer.
Battery Back-Up (Option)	UPS with 10-12 Hours of back up for digital temperature display.
Power Supply	Single Phase 220/230Volts AC.

A related but independent study confirms that for storage Sure Chill technology provides dependable cooling with negligible temperature variation.



Time (Day)

DRAWERS

The standard drawers can be optionally fitted with adjustable dividers. This guarantees neatly and clearly arranged storage of your goods.



OUR VALUED CUSTOMERS



IndianOil

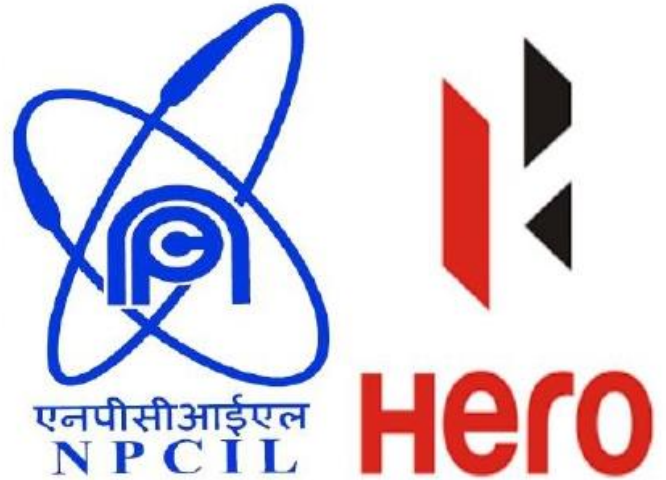
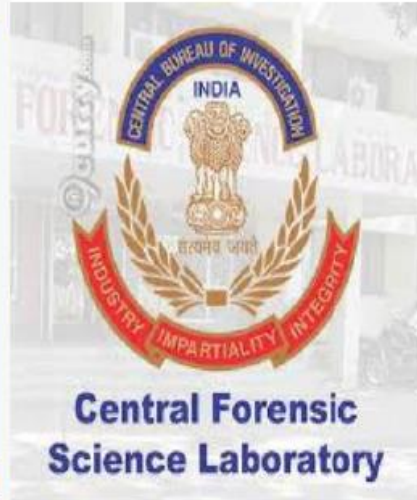


आरोग्यम् सुख सम्पदा



भारतीय मानक ब्यूरो
Bureau of Indian Standards
The National Standards Body of India







**MINISTRY OF CONSUMER
AFFAIRS, FOOD AND
PUBLIC DISTRIBUTION**

सत्यमेव जयते

रक्षा मंत्रालय
**MINISTRY OF
DEFENCE**
भारत सरकार



सत्यमेव जयते

रक्षा उत्पादन विभाग
**DEPARTMENT OF
DEFENCE PRODUCTION**
GOVERNMENT OF INDIA



ORDNANCE FACTORY BOARD

MINISTRY OF DEFENCE, GOI

**CENTRAL RESEARCH
INSTITUTE (CRI)
RECRUITMENT**

एन एस आई सी
NSIC
ISO 9001 : 2008



BHARAT DYNAMICS LTD.
(A Govt. of India Enterprise)



भाकृअनुष
ICAR



**Indian Institute of
Chemical Biology**

a unit of C.S.I.R.



आयुध निर्माणी, कानपुर
ORDNANCE FACTORY, KANPUR



सत्यमेव जयते

Department of Animal Husbandry,
Dairying & Fisheries



TROOP COMFORTS LTD.



Innovation + Service + Excellence

**International Centre
for Automotive Technology, Manesar**



Napino Auto & Electronics Ltd.

Cutwell Abrasives Pvt Ltd
ISO 9001 - Certified Superior in Performance

RICO
RICO AUTO INDUSTRIES LIMITED

senior
Flexonics

talbro
Automotive Components

fmi
Future Market Insights

JBM Group
Our milestones are touchstones

SOMIC ZF
SOMIC ZF Components Pvt. Ltd.

Genus
energizing lives

Continental
The Future in Motion


Saxon Fluid Sealing Devices

AMTEK

K
KIRAN UDYOD PVT. LIMITED

TOGETHER WE EXCEL

MHMC

MUNJAL
KIRIU

Napino

JABIL



DESPL
DYNAMIC ENVIRONMENTAL SOLUTIONS PVT. LTD.